

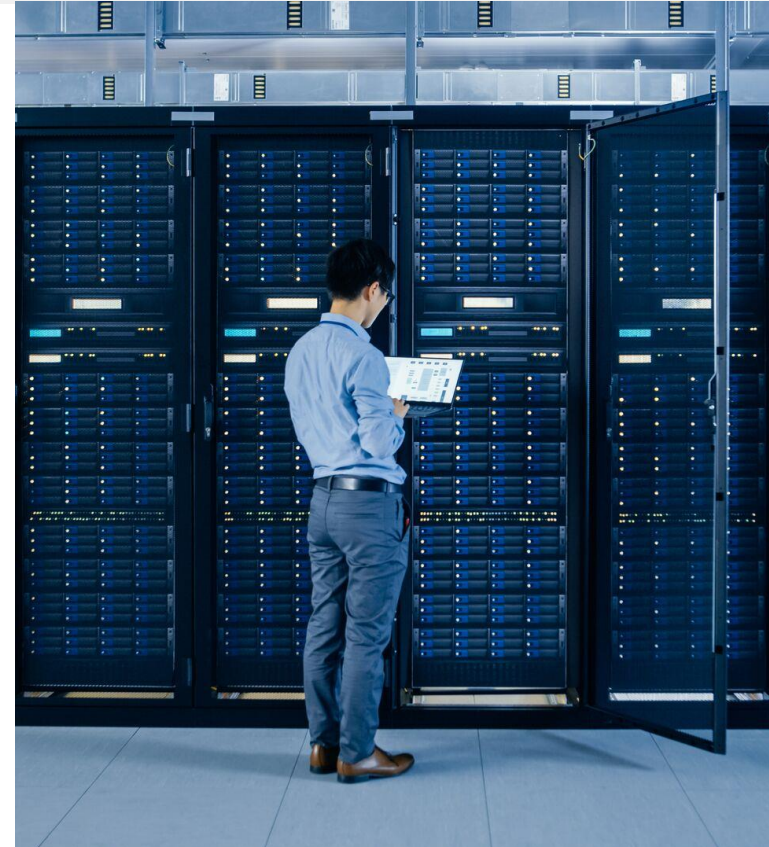
# Certified Professional Program Catalog

Version 24.04 v2



# Table of Contents

- About this catalog
- Certification program structure
- Certifications tracks:
  - Sales and Presales
  - Basics and Fundamentals
  - Installation and Support
  - Implementation and Integration
  - Administration
- Certification levels
- Certification systems



# About this catalog

This catalog lists the qualification tests and certification exams of the Hitachi Vantara Certified Professional Program.

- It covers all audiences - customers, partners and employees.
- It is organized by tracks, showing the training that support the tests and exams.

LEGEND	
<b>Title</b>	Curriculum title
<b>Course code - Course name</b> Duration and delivery type   Training Units	Delivery type: ILT = Instructor-Led Training vILT = virtual Instructor-Led Training On-Demand = e-learning (web-based training, videos)
<b>Qualification test or Certification exam name</b> Kryterion, proctored or unproctored	Proctored = Closed-book test or exam, scheduling required Unproctored = Open-book test, no scheduling needed
<b>Qualification credential name</b>	Qualification level credential (HQT-xxxx test) - <b>see note (*)</b>
<b>Certification credential name</b>	Certification level credential (HCE-xxxx exam)
<b>Professional path name</b>	Learning Path credential

## (\*) Note: technical HQT-xxxx qualification tests

Depending on the location and course delivery format, technical qualification tests (HQT-xxxx) may be offered and administered by the instructor at the conclusion of a course. Course attendance is required for taking a qualification test in the classroom.

Alternatively, such tests are also available through [Webassessor](#), either online (online proctored) or at Kryterion testing centers (onsite proctored).

# Program Structure

<span style="background-color: #00A0A0; color: white; padding: 2px 5px;"> </span> Qualification Level	<span style="background-color: #800000; color: white; padding: 2px 5px;"> </span> Certification Level
---	---

Track Name	Credential	Infrastructure Solutions						Pentaho+ Solutions	
		Storage		Data Protection		Converged Systems	Modern Object Store	Business Analytics	
Sales	Professional	Solution Selling HQT-1024							
Technical Presales (Partners)	Professional	Presales Data Infrastructure Foundation HQT-2124 Presales Data Solutions Foundation HQT-2224						Presales Data Operations Foundation HQT-2924	
Technical Presales (Employees)	Professional	Presales Solution Positioning HQT-2002							
Administration	Professional	Hitachi Ops Center Administration HQT-6741	Hitachi Ops Center Automation HQT-6761	NAS Administration HQT-6200	Hitachi Ops Center Protection HQT-6711	In-System Replication Management HQT-6713	Content Platform Administration HQT-6420		
		Hitachi Ops Center Analyzer Management HQT-6771	Performance Analysis with Ops Center Analyzer HQT-6701	Enterprise storage for mainframe HQT-6721	Global-Active Device Management and Operations HQT-6712	Universal Replicator Management HQT-6714	Content Platform for Cloud Scale Administration HQT-6430		
Implementation and Integration	Expert	Block Storage Solutions Implementation HCE-5700		Replication Solutions Implementation HCE-5710			Content Solutions Implementation HCE-5400		
	Specialist	NAS Solutions Implementation HCE-5210							
Installation and Support	Professional	VSP 5000 Series Installation HQT-4160	VSP Midrange Family Installation HQT-4180	VSP One File Installation HQT-4230			Content Platform Installation HQT-4420		
Basics and Fundamentals	Associate	Hitachi Ops Center Operations HQT-6751							
		Storage Concepts HQT-0050							

# Sales Partners

**Audience:** Partners  
**Test:** HQT-1024

Sales Foundation

**SCC2560 - Selling Hitachi Vantara Solutions for Sales Professionals**

1 hour | On-Demand

**HQT-1024 Solution Selling test**

Kryterion, unproctored

Hitachi Vantara Qualified Professional  
Solutions Selling

# Presales Partners

**Audience:** Partners  
**Tests:** HQT-2124, HQT-2224, HQT-2924

Infrastructure Solutions	Data Solutions	Pentaho+ Solutions
<b>TXX4011S - Data Infrastructure - Partner Presales Competency</b> 6 hours   On-Demand	<b>TXX4012S - Data Solutions - Partner Presales Competency</b> 6 hours   On-Demand	<b>PXX4010S - Data Operations - Partner Presales Competency</b> 1 hour   On-Demand
<b>HQT-2124 Presales Data Infrastructure Foundation test</b> Kryterion, unproctored	<b>HQT-2224 Presales Data Solutions Foundation test</b> Kryterion, unproctored	<b>HQT-2924 Presales Data Operations Foundation test</b> Kryterion, unproctored
Hitachi Vantara Qualified Professional Presales Data Infrastructure	Hitachi Vantara Qualified Professional Presales Data Solutions	Hitachi Vantara Qualified Professional Presales Data Operations

# Presales Employees

**Audience:** Employees  
**Test:** HQT-2002

Presales Technical Accreditation - Tier 1

**Hitachi Vantara Sales Plays**

On-Demand | SalesHive

**HQT-2002 Presales Solution Positioning test**  
Kryterion, unproctored

**Hitachi Vantara Qualified Professional**  
**Presales Solution Positioning**

# Basics and Fundamentals

## Storage concepts and basic storage operations

**Audiences:** Customers, partners, employees

**Tests:** HQT-0050, HQT-6751

Storage Concepts	Storage Operations
<b>CCI0110 - Storage Concepts</b> 2-day ILT or vILT   2 Training units	<b>TXI3932 - Working With Hitachi Ops Center</b> 5-day ILT or vILT   5 Training units
OR	OR
<b>CCP0110 - Storage Concepts curriculum</b> 8 hours   On-Demand	<b>TXI3932 - Working With Hitachi Ops Center curriculum</b> 30 hours   On-Demand
<b>HQT-0050 Storage Concepts test</b> Kryterion, unproctored	<b>HQT-6751 Ops Center Operations test</b> Kryterion, proctored
<b>Hitachi Vantara Qualified Associate Storage concepts</b>	<b>Hitachi Vantara Qualified Associate Ops Center Operations</b>



# Installation and Support

## VSP storage systems

**Audiences:** Partners, employees  
**Tests:** HQT-4160, HQT-4180

### VSP Midrange Systems

#### 1024PI - Installing and Configuring Hitachi VSP Midrange Family

4-day ILT or vILT | 4 Training units

#### 1037PI - Hitachi VSP E Series Refresher Workshop: What's New and Installation

1-day ILT or vILT | 1 Training units

#### 1067PC - What's New in the Hitachi VSP E Series: VSP E1090 and Updates to VSP E790 and E590

1 hour | On-Demand

#### HQT-4180 VSP Midrange Family Installation test

Kryterion, proctored

Hitachi Vantara Qualified Professional  
VSP Midrange Family Installation

Hardware engineers new to Hitachi VSP Midrange

#### HQT-4180 VSP Midrange Family Installation test

Kryterion, proctored

Hitachi Vantara Qualified Professional  
VSP Midrange Family Installation

Hardware engineers trained on VSP Midrange  
prior to models E790, E590 & E1090

### VSP Enterprise systems

#### 1090PI - Installing and Configuring the Hitachi VSP 5000 Series

5-day ILT or vILT | 5 Training units

#### HQT-4160 VSP 5000 Series Installation test

Kryterion, proctored

Hitachi Vantara Qualified Professional  
VSP 5000 Series Installation

Hardware engineers who need  
VSP 5000 Series training

# Installation and Support

## File and Content storage systems

**Audiences:** Partners, employees  
**Tests:** HQT-4230, HQT-4420

### File storage systems

#### TCI2035 - Installing and Supporting Hitachi VSP One File

4-day ILT or vILT | 4 Training units

#### HQT-4230 VSP One File Installation test

Kryterion, proctored

Hitachi Vantara Qualified Professional  
VSP One File Installation

### Content storage systems

#### TCI2741 - Installing and Configuring Hitachi Content Platform

2-day ILT or vILT | 2 Training units

#### HQT-4420 Content Platform Installation test

Kryterion, proctored

Hitachi Vantara Qualified Professional  
Content Platform Installation

# Implementation and Integration

## Block storage, File and Content solutions

**Audiences:** Partners, employees  
**Exams:** HCE-5700, HCE-5400, HCE-5210

### Block Storage Solutions

Block storage training stripe on the Services Technical Training page in the Learning Center

**HCE-5700 Block Storage Solutions Implementation exam**  
Kryterion, proctored

**Hitachi Vantara Certified Expert**  
**Block Storage Solutions Implementation**

### Content Solutions

Content training stripe on the Services Technical Training page in the Learning Center

**HCE-5400 Content Solutions Implementation exam**  
Kryterion, proctored

**Hitachi Vantara Certified Expert**  
**Content Solutions Implementation**

### NAS Solutions

**TCI2909 - Implementing Hitachi VSP Gx00/VSP Fx00 With NAS Modules and HNAS 4000 Series Systems**

5-day ILT or vILT | 5 Training units

**HCE-5210 NAS Solutions Implementation exam**  
Kryterion, proctored

**Hitachi Vantara Certified Specialist**  
**NAS Solutions Implementation**

# Implementation and Integration

## Replications solutions

**Audiences:** Partners, employees  
**Exam:** HCE-5710

### Replications Solutions

#### **TXI6752 – Managing In-System Replication**

2-day ILT or vILT | 2 Training units

#### **1197CI - Installing and Configuring Global-Active Device (GAD)**

1-day ILT or vILT | 1 Training unit

#### **1202CI - Installing and Configuring Hitachi Universal Replicator (HUR)**

1-day ILT or vILT | 1 Training unit

#### **1112CV - Managing TrueCopy Replication**

1 hour | On-Demand

#### **TSI2728 – Operating and Managing Global-Active Device**

3-day ILT or vILT | 3 Training units

#### **1086CI – Managing Hitachi Universal Replicator (HUR)**

3-day ILT or vILT | 3 Training units

#### **TSI2995 – Managing Data Protection with Hitachi Ops Center Protector**

3-day ILT or vILT | 3 Training units

### **HCE-5710 Replication Solutions Implementation exam**

Kryterion, proctored

**Hitachi Vantara Certified Expert**  
**Replication Solutions Implementation**

# Implementation and Integration

## Pentaho solutions

**Audiences:** Customers, partners, employees  
**Exams:** HCE-5910, HCE-5920

### Pentaho Solutions

#### **PBA100L – Pentaho Business Analytics**

1-day ILT or vILT | 1 Training units

#### **PCT1000L – Pentaho Ctools Fundamentals**

2-day ILT or vILT | 2 Training units

#### **PDI1000L – Pentaho Data Integration Fundamentals**

3-day ILT or vILT | 3 Training units

#### **PRD1000L – Pentaho Report Designer**

2-day ILT or vILT | 2 Training units

#### **PCT2000L – Pentaho Ctools Advanced**

2-day ILT or vILT | 2 Training units

#### **PDI2000L – Pentaho Data Integration Advanced**

2-day ILT or vILT | 2 Training units

#### **PDM200L – Pentaho Data Modeling**

2-day ILT or vILT | 2 Training units

#### **HCE-5910 Pentaho Business Analytics Implementation exam**

Kryterion, proctored

#### **HCE-5920 Pentaho Data Integration Implementation exam**

Kryterion, proctored

**Hitachi Vantara Certified Expert**  
**Pentaho Business Analytics Implementation**

**Hitachi Vantara Certified Expert**  
**Pentaho Data Integration Implementation**

Pentaho training must be purchased with Pentaho Training Credits and cannot be purchased with the Hitachi Training Card.

# Administration

## Block storage management and operations (1 of 2)

**Audiences:** Customers, partners, employees  
**Tests:** HQT-6741, HQT-6761, HQT-6721

### Storage Management and Operations

#### TSI2929 – Hitachi Ops Center Administrator

5-day ILT or vILT | 5 Training units

OR

#### TSP2929 – Hitachi Ops Center Administrator curriculum

18 hours | On-Demand

#### TSI2690 – Managing Hitachi Ops Center Automator

2-day ILT or vILT | 2 Training units

OR

#### TSP2690 – Managing Hitachi Ops Center Automator curriculum

16 hours | On-Demand

#### 1252CI – Hitachi Enterprise Storage for Mainframe Management

5-day ILT or vILT | 5 Training units

#### HQT-6741 Hitachi Ops Center Administration test

Kryterion, proctored

#### HQT-6761 Hitachi Ops Center Automator test

Kryterion, proctored

#### HQT-6721 Enterprise Storage for Mainframe Management test

Kryterion, proctored

Hitachi Vantara Qualified Professional  
Ops Center Administration

Hitachi Vantara Qualified Professional  
Ops Center Automation

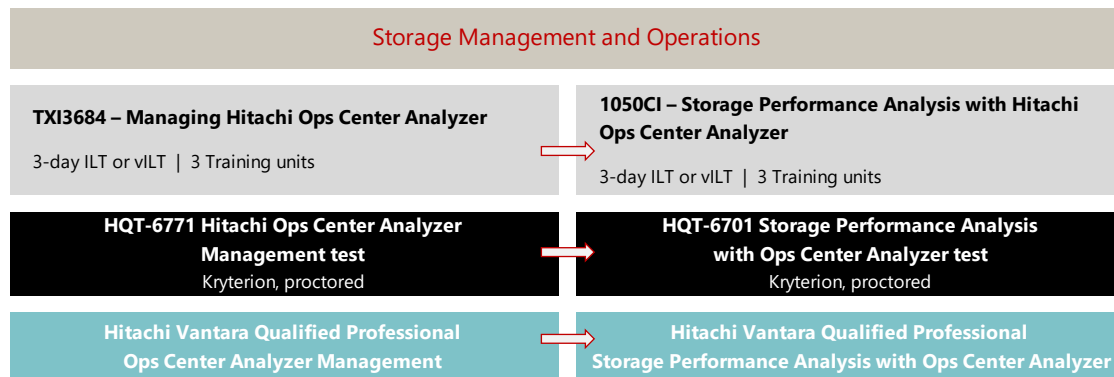
Hitachi Vantara Qualified Professional  
Enterprise Storage for Mainframe Management

# Administration

## Block storage management and operations (2 of 2)

**Audiences:** Customers, partners, employees

**Tests:** HQT-6771, HQT-6701



# Administration

## Storage data protection (1 of 2)

**Audiences:** Customers, partners, employees

**Tests:** HQT-6711, HQT-6712

### Storage Data Protection

**TSI2995 – Managing Data Protection with Hitachi Ops Center Protector**

3-day ILT or vILT | 3 Training units

**TSI2728 – Operating and Managing Global-Active Device**

3-day ILT or vILT | 3 Training units

**HQT-6711 Hitachi Ops Center Protection test**

Kryterion, proctored

**HQT-6712 Global-Active Device Management and Operations test**

Kryterion, proctored

**Hitachi Vantara Qualified Professional  
Ops Center Protection**

**Hitachi Vantara Qualified Professional  
Global-Active Device Management and Operations**



# Administration

## Storage data protection (2 of 2)

**Audiences:** Customers, partners, employees

**Tests:** HQT-6713, HQT-6714

### Storage Data Protection

#### TXI6752 – Managing In-System Replication

2-day ILT or vILT | 2 Training units

#### 1086CI – Managing Hitachi Universal Replicator (HUR)

3-day ILT or vILT | 3 Training units

#### HQT-6713 In-System Replication Management test

Kryterion, proctored

#### HQT-6714 Hitachi Universal Replicator Management test

Kryterion, proctored

Hitachi Vantara Qualified Professional  
Ops Center Analyzer Management

Hitachi Vantara Qualified Professional  
Universal Replicator management

# Administration

## File and Content storage management and operations

**Audiences:** Customers, partners, employees

**Tests:** HQT-6200, HQT-6420, HQT-6430

File Storage Management and Operations	Content Storage Management and Operations	
<b>TCI2910 – Managing Hitachi Network Attached Storage (NAS)</b> 5-day ILT or vILT   5 Training units	<b>TCI2743 – Operating and Managing Hitachi Content Platform</b> 3-day ILT or vILT   3 Training units	<b>TXI6795 – Managing Hitachi Content Platform for Cloud Scale</b> 3-day ILT or vILT   3 Training units
	<b>TCP2743 – Operating and Managing Hitachi Content Platform curriculum</b> 24 hours   On-Demand	
<b>HQT-6200 Hitachi NAS Administration test</b> Kryterion, proctored	<b>HQT-6420 Hitachi Content Platform Administration test</b> Kryterion, proctored	<b>HQT-6430 Hitachi Content Platform for Cloud Scale Administration test</b> Kryterion, proctored
Hitachi Vantara Qualified Professional NAS Administration	Hitachi Vantara Qualified Professional Content Platform Administration	Hitachi Vantara Qualified Professional Content Platform for Cloud Scale Administration

# Professional Learning Path

## Storage administration

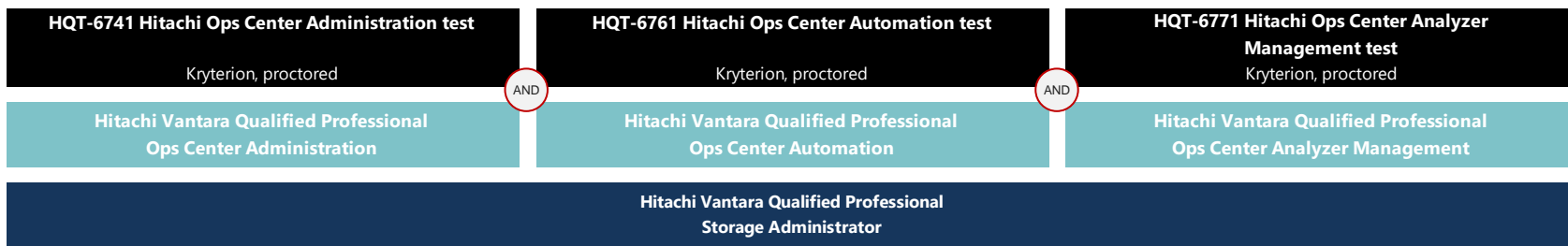
**Audiences:** Customers, partners, employees  
**Tests:** HQT-6741, HQT-6761, HQT-6771

Completing the three tests signifies the mastery of storage administration using Hitachi Ops Center and leads to the Learning Path credential:

**Hitachi Vantara Qualified Professional - Storage Administrator**



### Professional Learning Path - Storage Administration



# Professional Learning Path

## Object storage administration

**Audiences:** Customers, partners, employees  
**Test:** HQT-6420

Completing the test and courses signifies the mastery of object storage administration for Hitachi Content Platform and leads to the Learning Path credential:

**Hitachi Vantara Qualified Professional - Object Storage Administrator**



### Professional Learning Path - Object Storage Administration

**HQT-6420 Hitachi Content Platform Administration test**

Kryterion, proctored

AND

**TSI6765 – Operating and Managing Hitachi Content Monitor**

1-day ILT or vILT | 1 Training unit

AND

**TXI6819 – Managing HCP Gateway for Windows**

2-day ILT or vILT | 2 Training units

Hitachi Vantara Qualified Professional  
Content Platform Administration

Hitachi Vantara Qualified Professional  
Object Storage Administrator

# Professional Learning Path

## Data protection

**Audiences:** Customers, partners, employees  
**Tests:** HQT-6711, HQT-6712, HQT-6713, HQT-6714

Completing the four tests signifies the mastery of data protection administration using Hitachi Ops Center Protector with Hitachi replication products and leads to the Learning Path credential:

**Hitachi Vantara Qualified Professional - Data Protection Administrator**



### Professional Learning Path - Data Protection Administration

HQT-6711 Hitachi Ops Center Protection test

Kryterion, proctored

AND

HQT-6712 Global-Active Device Management and Operations test

Kryterion, proctored

AND

HQT-6713 In-System Replication Management test

Kryterion, proctored

AND

HQT-6714 Hitachi Universal Replicator Management test

Kryterion, proctored

Hitachi Vantara Qualified Professional  
Ops Center Protection

Hitachi Vantara Qualified Professional  
Global-Active Device Management and Operations

Hitachi Vantara Qualified Professional  
Ops Center Analyzer Management

Hitachi Vantara Qualified Professional  
Universal Replicator management

Hitachi Vantara Qualified Professional  
Data Protection Administrator

# Credential Levels

## Qualification

This level of testing uses medium-stakes exams typically in two contexts:

- Validation of broad and general expertise on subjects that evolve rapidly and for which a flexible assessment mechanism with short development cycles is needed.
- Validation of basic and fundamentals technical knowledge acquired academically, usually through course attendance, and for which entry-level testing is appropriate.

Typical Hitachi Vantara qualification tests include about 35 multiple-choice questions. Open-book tests are delivered online and unproctored. Closed-book tests are always proctored and can be delivered as end-of-course tests, or in a stand-alone format either online or at Kryterion testing centers.



### ASSOCIATE QUALIFICATION

A recognition of expertise acquired in an academic format for a given subject area. This entry-level credential validates introductory level technical knowledge.

### PROFESSIONAL QUALIFICATION

A validation of general and foundational knowledge for a given subject area and aligned to a specific job role. Qualified professionals perform general level work in selected subject areas.

# Credential Levels

## Certification

Certification relates to high-stakes exams that are designed to effectively and accurately validate that candidates have the skills, knowledge and abilities to perform specifically identified tasks as they relate to their job in real-life situations.

To pass certification exams, candidates are expected to use knowledge acquired through multiple means and experiences, including various formal and informal training and learning methods. It is therefore normal and expected that certification exams will cover topics that are beyond the sole scope of any given course or set of courses that have been identified to support the exams.

Hitachi Vantara certification exams typically include about 60 multiple-choice questions. They are closed-book proctored exams delivered either online or at Kryterion test centers.



### SPECIALIST CERTIFICATION

A validation that the candidate has the required technical knowledge, skills and abilities to perform advanced tasks in given subject areas. Certified specialists have multilayer technical skills, handle complex solutions and are usually specialized in one or more areas.

### EXPERT CERTIFICATION

A recognition of very high levels of technical knowledge, skills and abilities in one or several areas. Certified experts combine their solid experience in the IT industry with strong expertise and business acumen to deliver high-value services in complex environments.

# Systems – Webassessor:

Test and candidate management + test delivery



Kryterion has over 1000 testing centers in 120 countries and also provides online proctoring functionality so medium and high-stakes proctored certification exams can be taken anywhere an internet connection and a suitable environment are available. Online unproctored testing is available for open book tests.

## ONLINE PROCTORED EXAM REQUIREMENTS

- External webcam (USB-attached)
- Respondus Secure Browser software installed (provided by Kryterion)

Webassessor is available under SSO [here](#).

A test taker user guide is available [here](#).





# Systems – CertMetrics:

## Candidate and credential management



The CertMetrics system from Alpine Solutions, Inc. is used to track and manage certification/qualification credentials. With Alpine's CertMetrics system candidates can:

- Review and update your demographic data
- Check your certification status
- View your certification history
- Download your logos and certificates
- Create and manage transcripts

CertMetrics is also the central database for certification reporting.

The system is available [here](#).

A user guide is available [here](#).



# Systems – Credly:

## Digital badges



We partnered with Credly for our free digital badging service. On the Credly system candidates can:

- Share badges on digital platforms such as social media, email signature, embedded in your résumé or in web sites
- Access Labor Market Insights to connect your skills and abilities with job opportunities
- Digitally verify competencies

The system is available [here](#).

General information about Hitachi Vantara digital badges is available [here](#).



# Thank you